

## Flexible spaces

The 2nd, 5th and 7th floors offer flexible accommodation with spectacular views across the surrounding area.

Additional meeting room and serviced office facilities are available on-site from one person upwards, via Pure Offices.

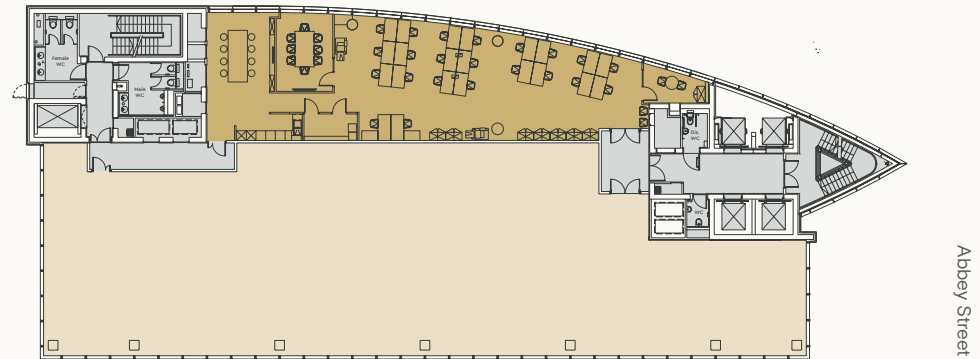
Floor	Occupier/Availability	Sq Ft*	Sq M*
13th	Gateley Plc		
12th	Urban Science International		
11th	Bracket Global		
10th	Barton Willmore		
9th	Barton Willmore Brandview		
8th	Brandview		
<b>7th</b>	<b>Available</b> Cloudfactory	<b>2,218</b>	<b>206</b>
6th	Cambio Healthcare Hays Recruitment		
<b>5th</b>	<b>Available</b>	<b>8,406</b>	<b>781</b>
4th	Pure Offices (serviced offices)		
3rd	Pure Offices (serviced offices)		
<b>2nd</b>	<b>Available</b> CMS Law	<b>2,198</b>	<b>204</b>
1st	Megabuyte Kaplan		
Ground	Kaplan		
<b>Total</b>		<b>12,822</b>	<b>1,191</b>

\* All sizes are to the International Property Measurement Standard (IPMS). Plans and areas for indicative purposes only. Not to scale.

### 2nd floor 2,198 sq ft/204 sq m



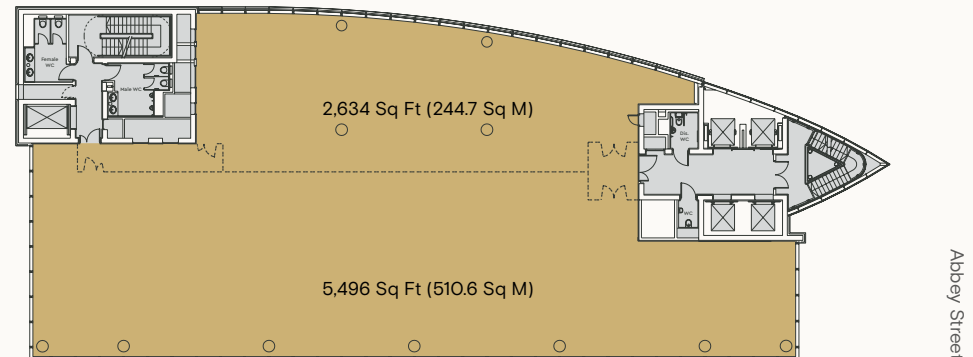
Abbey Square



Indicative layout.

### 5th floor 8,406 sq ft/781 sq m

Abbey Square



● Available office space ● Let ● Core --- Potential Split